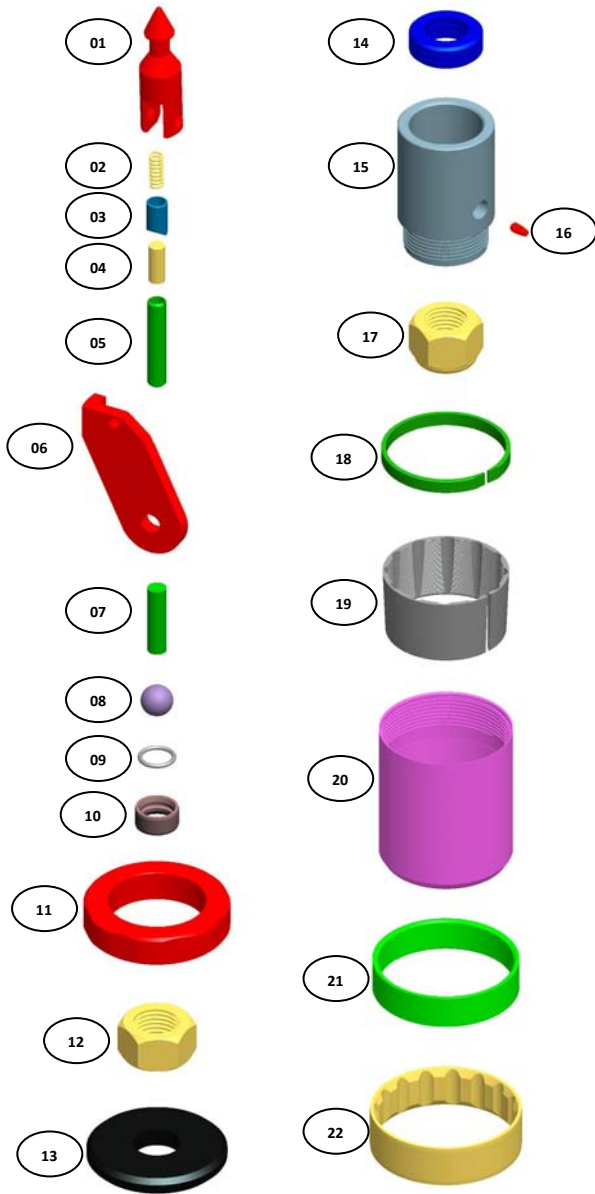


**PWL-LI CORE BARREL SPARE PARTS KIT**



	ITEM DESCRIPTION	PART NUMBERS
<b>1-22</b>	<b>PWL-LI CORE BARREL SPARE PARTS KIT</b>	<b>20-00-140</b>
<b>1</b>	<b>SPEARHEAD POINT</b>	<b>16-03-001</b>
<b>2</b>	<b>COMPRESSION SPRING</b>	<b>16-03-002</b>
<b>3</b>	<b>DETENT PLUNGER</b>	<b>16-03-003</b>
<b>4</b>	<b>SOLID DOWELL 7/16" x 1"</b>	<b>16-03-005</b>
<b>5</b>	<b>SPRING DOWELL 1/2" x 2 3/4" - 2 NOS.</b>	<b>18-03-003</b>
<b>6</b>	<b>PWL-LI LATCH - 2 NOS.</b>	<b>20-03-002</b>
<b>7</b>	<b>SOLID DOWELL 1/2" x 2 1/8"</b>	<b>18-03-006</b>
<b>8</b>	<b>STAINLESS STEEL BALL 22 mm</b>	<b>16-03-014</b>
<b>9</b>	<b>LANDING INDICATOR BUSH O RING</b>	<b>16-03-016</b>
<b>10</b>	<b>LANDING INDICATOR BUSH</b>	<b>16-03-015</b>
<b>11</b>	<b>LANDING SHOULDER</b>	<b>20-03-003</b>
<b>12</b>	<b>ADJUSTING HEX NUT</b>	<b>20-03-004</b>
<b>13</b>	<b>SHUT OFF VALVE - 2 NOS.</b>	<b>20-03-007</b>
<b>14</b>	<b>THRUST BEARINGS - 3 NOS.</b>	<b>20-03-009</b>
<b>15</b>	<b>BEARING SPINDLE</b>	<b>20-03-010</b>
<b>16</b>	<b>GREASE FITTING</b>	<b>16-03-024</b>
<b>17</b>	<b>NYLOCK NUT , 1 1/4" UNC</b>	<b>20-03-013</b>
<b>18</b>	<b>RING STOP</b>	<b>20-03-021</b>
<b>19</b>	<b>CORE LIFTER</b>	<b>20-03-022</b>
<b>20</b>	<b>CORE LIFTER CASE</b>	<b>20-03-023</b>
<b>21</b>	<b>RING LANDING</b>	<b>20-02-003</b>
<b>22</b>	<b>STABILIZER RING</b>	<b>20-02-006</b>